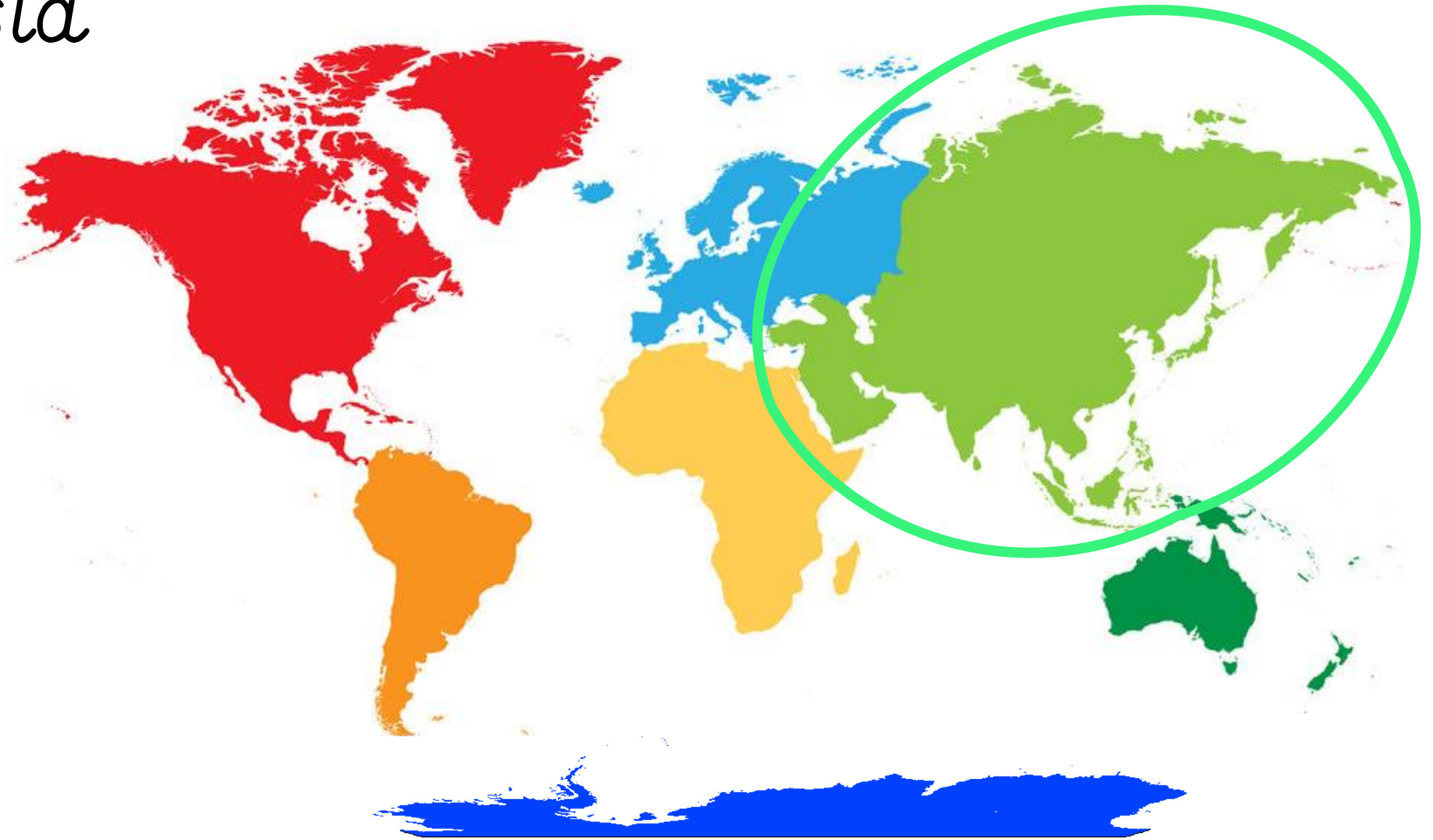


All Around the World

Third Stop:
Asia



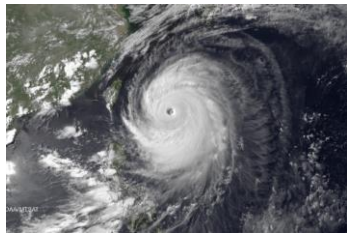
Asia



Asia



- Asia is the largest continent and has the largest population.
- The weather is different all over Asia. Countries in the North can be very cold while countries in the south are very hot.
- Many countries in Asia also experience Monsoons and tropical cyclones.



Mrs Charles is from Japan, a country in Asia.

Famous Landmarks



Great Wall of China,
China



Taj Mahal, India



Grand Palace,
Thailand



Gardens in the
Bay, Singapore



Burj Khalifa, Dubai,
UAE



Osaka Castle,
Japan



Hagia Sophia,
Turkey



Ha Long Bay,
Vietnam

Geography of Asia



Lake Baikal, Russia, is the deepest and oldest lake in the world (25million years old).

Himalayas are the worlds tallest mountains. They stretch between Nepal and China.



The Gobi desert is the largest desert in Asia. It is a cold desert and can sometimes be covered in snow.



The highest mountain in the world, Mt Everest, is in the Himalayas.



UK / Japan



UK

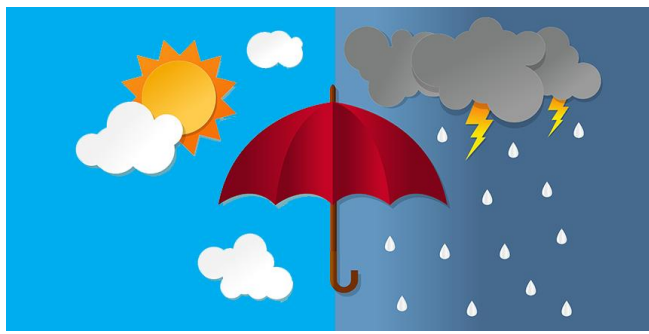
- Language: English
- Population: 6 million
- Location: Europe
- Capital City: London (England)
- Currency: Pounds



Japan

- Language: Japanese
- Population: 126 million
- Location: Asia
- Capital City: Toyko
- Currency: Yen





UK / Japan

UK weather

- Warm summers (15-30 degrees)
- Cold winters (0-10)
- Rain through most of the year.

Japan weather

- Hot and humid summers (21-32)
- Cold winters (5-12) many places get snow.
- Heavy rainfall all year
- Typhoons (wind and rain) during summer - Autumn.

UK / Japan

UK food

- Traditional meals in the UK include:

- Meat (beef, chicken, lamb)
- Vegetables
- Potatoes

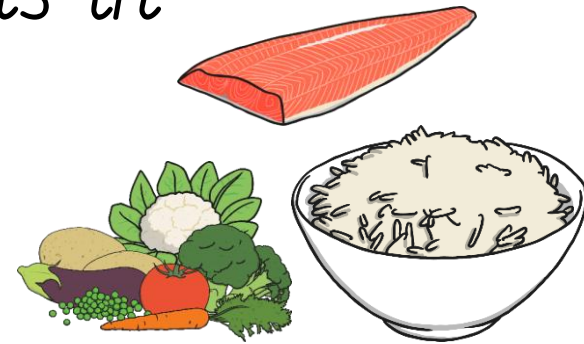


- People in the UK usually eat food that is shipped from around the world.

Japan food

- Traditional meals in Japan include:

- Fish/Seafood
- Vegetables
- Rice/Noodles



- People in Japan usually eat food that is available during the year.

UK / Japan

UK clothing

- People in the UK don't usually wear traditional clothing.
- In Scotland men wear kilts to important celebrations.
- They are made of a patterned material called Tartan.



Japan clothing

- Most people in Japan wear similar clothes to people in UK.
- Traditional Japanese clothes include the Kimono.
- It is made of silk and is often worn for important festivals.



UK / Japan



UK writing

- Books in English are written from left to right.
- English using a Latin alphabet with 26 letters.

Japan writing

- Traditional Japanese writing is written top to bottom and right to left.
- Modern writing is written left to right.
- Japanese alphabet combines Chinese characters and 2 other alphabets. This includes over 2000 symbols altogether with different pronunciations.

Japan 日本

Hello こんにちは